



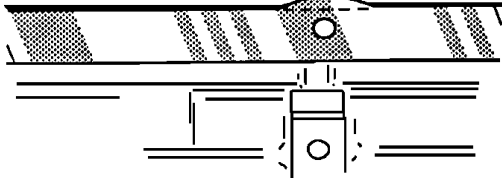
FEL-PRO INSTALLATION TIPS

Fel-Pro products are the result of exhaustive research and strict quality control. However, no sealing product is better than the quality of its installation.

VALVE COVER GASKET

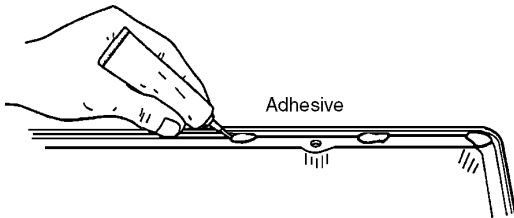
CLEAN MATING SURFACES of all foreign material including old gaskets, RTV, and oil. You may wish to use a degreaser. Also, clean oil return holes.

Cut Bulges Off Gasket, If Required

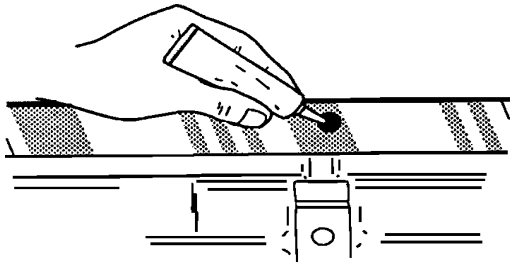


CHECK COVER FLANGES for flatness. Straighten stamped metal covers. Replace if severely distorted. Distorted cast aluminum or plastic covers are difficult to straighten and should be replaced.

IMPORTANT: Engines with valve covers having a lip at the edge of the flange require a slight modification to the gasket. Using a sharp blade, make straight cuts to trim the outer bulges adjacent to 2 of the bolt holes.



ATTACH AND ALIGN GASKET TO COVER. Apply quick-drying adhesive sparingly in several places on the mating surface of cover. If gasket has installation tabs, adhesive is not required. Mount gasket on cover. **Allow time for adhesive to set.** Test for slippage with light pressure. If gasket moves, allow more time.



PRIOR TO INSTALLING VALVE COVER, fill the 2 gasket bolt holes with a silicone sealer. **IMMEDIATELY PROCEED** to the next step, as sealer normally sets up in 10-15 minutes.

REINSTALL VALVE COVER TO ENGINE. Torque securely to OEM specifications. Over-torquing can distort cover and cause leakage.

TEST RUN ENGINE. Check all mating areas thoroughly to determine that all seals hold during operation.



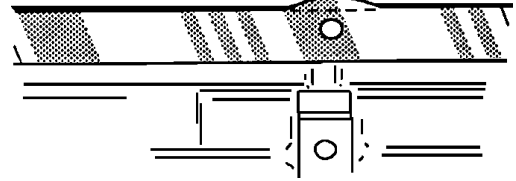
FEL-PRO INSTALLATION TIPS

Fel-Pro products are the result of exhaustive research and strict quality control. However, no sealing product is better than the quality of its installation.

VALVE COVER GASKET

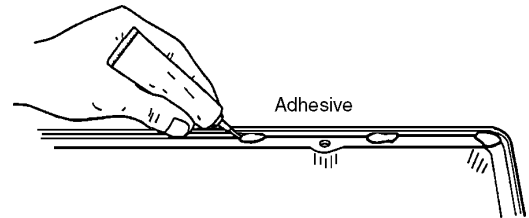
CLEAN MATING SURFACES of all foreign material including old gaskets, RTV, and oil. You may wish to use a degreaser. Also, clean oil return holes.

Cut Bulges Off Gasket, If Required

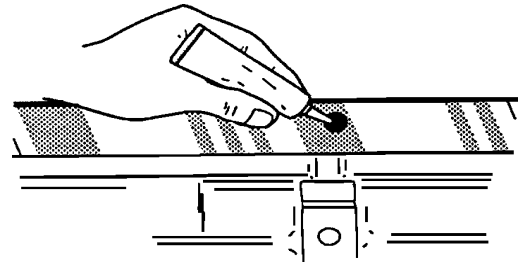


CHECK COVER FLANGES for flatness. Straighten stamped metal covers. Replace if severely distorted. Distorted cast aluminum or plastic covers are difficult to straighten and should be replaced.

IMPORTANT: Engines with valve covers having a lip at the edge of the flange require a slight modification to the gasket. Using a sharp blade, make straight cuts to trim the outer bulges adjacent to 2 of the bolt holes.



ATTACH AND ALIGN GASKET TO COVER. Apply quick-drying adhesive sparingly in several places on the mating surface of cover. If gasket has installation tabs, adhesive is not required. Mount gasket on cover. **Allow time for adhesive to set.** Test for slippage with light pressure. If gasket moves, allow more time.



PRIOR TO INSTALLING VALVE COVER, fill the 2 gasket bolt holes with a silicone sealer. **IMMEDIATELY PROCEED** to the next step, as sealer normally sets up in 10-15 minutes.

REINSTALL VALVE COVER TO ENGINE. Torque securely to OEM specifications. Over-torquing can distort cover and cause leakage.

TEST RUN ENGINE. Check all mating areas thoroughly to determine that all seals hold during operation.