

# APPLICATION GUIDE

## SANDING/ADDITIONAL PREPARATION

**Painted Surfaces:** Scuff and scratch the entire area to be coated using a minimum of 180 grit sanding abrasive (a cup brush is recommended). Make sure to get all corners, grooved and notched areas thoroughly. Clean the surface with a fast drying pre-paint cleaner insuring to not leave any debris or residue. Apply a light mist coat of the adhesion promoter utilizing the enclosed mist nozzle. Allow the adhesion promoter to tack off or flash for 10 to 15 minutes prior to applying this product.

**Bare Metal:** Thoroughly clean or media blast the bare metal surface to insure removal of all preservatives and debris. Once the metal is clean, it is recommended to use a self-etching primer that is rated for the bare metal you are applying to. This is to ensure proper adhesion and to prevent future rusting. Once the self-etching primer has cured to the manufacturers recommendations, apply a light mist coat of the adhesion promoter and allow to tack off for 10-15 minutes prior to applying this product.

**Wood:** Thoroughly clean area to be sprayed insuring all residues, dust, etc. are removed. The adhesion promoter is not necessary for wood.

**Fiberglass:** Follow instructions for Painted Surfaces.

## MIXING INSTRUCTIONS





1. Empty contents of Components B, C and Tint in to container marked Component A.
2. Use the included low viscosity mixing paddle to thoroughly mix the contents until all of the white is gone and color is uniform (60 seconds max).



### ADDITIONAL NOTES:

- The B Component must be shaken vigorously prior to mixing.
- For custom colors it is recommended using 8 ounces of high grade automotive base pigments per gallon. Do not use paints containing binders or thinners. Some custom colors may not match when first mixed. Allow the coating to cure for 24-72 hours for accurate color display.

## GENERAL WARNINGS

-  This product contains materials that are harmful if inhaled. All persons in the spray area must wear an approved painter's respirator. Do not spray without proper safety equipment.
-  Applicators must mix and spray in a well-ventilated area.
-  This product has a 10-20 minute pot life once mixed. Make sure to read all instructions and are ready to spray before mixing.
-  For a copy of the Material Safety Data Sheets, please contact your local supplier or call 800-483-9087.

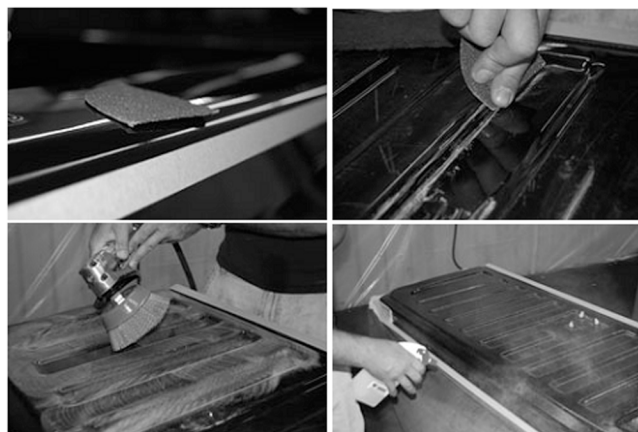
## WARRANTY INFORMATION

This product has limited-lifetime warranty. The warranty does not cover physical damage and the application is up to the applicator. In order to have a successful application, it is recommended to read the mix and spray instructions carefully.

## SURFACE PREPARATION

Surface preparation is the key step to achieving a long lasting and durable coating. The following section explains techniques and tips for applying this product to many surfaces.

1. Tape off area to be sprayed. It is recommended to use 3/4 inch painter's tape to establish a tape line (wire tape not required). Use tape and paper or plastic masking materials to protect areas where there will be potential for overspray. Also be sure to protect all adjacent objects in spray area from possible overspray.



## MIXING RATIOS

### QUART BATCH

A	B	C	TINT/CUSTOM COLOR
17.5 OZ	7 OZ	7 OZ	1 OZ STANDARD TINT 2 OZ CUSTOM PIGMENT

### 1/2 GALLON BATCH

A	B	C	TINT/CUSTOM COLOR
35 OZ	14 OZ	14 OZ	2 OZ STANDARD TINT 4 OZ CUSTOM PIGMENT

### GALLON BATCH

A	B	C	TINT/CUSTOM COLOR
70 OZ	28 OZ	28 OZ	4 OZ STANDARD TINT 8 OZ CUSTOM PIGMENT

# APPLICATION WITH SPRAY GUN

This product can be applied in many ways which allows an applicator to achieve various thicknesses, textures and appearances. We recommend using the AI's Spray Gun for best control of texture and thickness but you may consider the AI's Brush and Roller Kit if you do not have the right equipment or facilities for spray application.

## RECOMMENDATION

- We recommend installing a shut off valve or regulator at the base of the gun to gain air pressure control at the gun. AI's Spray Gun will blow air constantly without a regulator. The material is not released until the trigger is pulled but it will require a much larger air compressor without some type of air control at the gun.
1. Prior to putting mixed material in the hopper, thoroughly coat the metal feed section of the gun with AI's LMR (Mold Release). Once you are finished spraying, turn the gun upside down on its hopper to allow the excess liner to drain out of the gun. This allows for easy cleaning. Allow to sit for 2 to 8 hours and remove hardened liner from the gun. If you choose not to use AI's LMR you can flush the gun immediately after use with any standard solvents.
  2. Connect your AI's Liner Spray Gun to an air compressor that can maintain at least 35 PSI at 7 CFM.
  3. Pour a small amount of mixed material into your gun to start. Shut the trigger off using the turn knob on the back of the gun. Set your air pressure to 35 PSI and back the trigger knob out until you see the texture you desire. You can vary the texture by adjusting air pressure and trigger pull. Less air and more trigger will give you an "orange peel" texture and more air with less trigger will give you a more textured finish.
  4. Maintain 18" from the surface you are spraying. Try and maintain a right angle from the spray area. Make sure to spray from multiple directions and angles to avoid shadowing and light spots.
  5. Base the entire spray area to begin then utilize the remaining materials to build up the high abuse areas such as the floor, tailgate and back side of the wheel wells.
  6. Immediately following spraying, peel the plastic/paper protection off the 3/4" tape liner. Then remove the tape line by pulling at a 45 degree angle into the bed liner. This will allow the tape line overspray to roll into the bed.

## ADDITIONAL NOTES:

- The cure time for this product is 24 hours for light-duty use and 72 hours for full cure.



# APPLICATION WITH BRUSH AND ROLLER KIT

## RECOMMENDATION

- Brushing/Rolling allows for a nice array of textures and applications of this product, but it requires more care during the application to keep a consistent texture. To ensure a consistent coat, mix smaller batches one at a time to avoid getting too far into the pot life. We recommend mixing no more than 1/2 gallon at a time if brushing.
1. Start by using the 3" brush to coat corners and any areas that will be hard to reach with the roller. Once coated, you can go back over the brushed areas with the roller to develop an even texture.
  2. After brushing all hard to reach areas begin coating the side walls and back wall with the 4" roller. Keep in mind rolling will take multiple applications to get the thickness desired. Do not be concerned if the first coat does not completely cover the surface area.
  3. After applying the first coat, allow application to dry for 2 to 4 hours depending on the temperature before applying the second coat. Follow this step until all the material has been applied and the desired thickness is achieved.
  4. If you are looking for a more aggressive texture, on the final application allow the roller to sit for 5 to 10 minutes then lightly pull the roller across the liner to develop texture.
  5. Immediately follow the final coat, peel the plastic/paper protection off the 3/4" tape liner. Then remove the tape line by pulling at a 45 degree angle into the bed liner. This will allow the tape line overcoat to roll into the bed.

