

IB188

Release Bearing Installation

Chevrolet and GMC applications, 1995 and older.

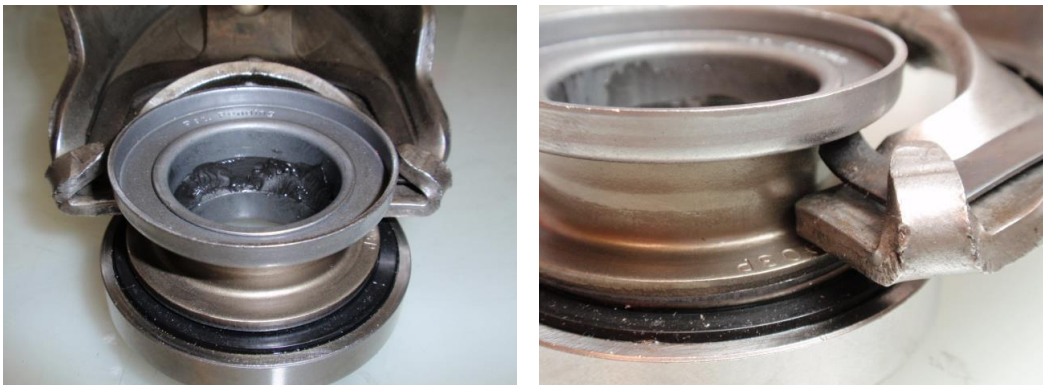


The clutch release fork spring tabs must be installed under the rear flange of the bearing, never behind the rear flange. Incorrectly installed will cause:

1. The clutch will not release correctly.
2. Release bearing and clutch fork may be damaged.
3. Mechanical or hydraulic release system components may also be damaged.

NOTE: Warranty claims will NOT be accepted as a result of incorrect installation as illustrated above.

Effective with clutch kits starting in early 2015 a revised bearing design has been introduced to eliminate the possibility of incorrectly installing the bearing on the fork. The revised bearing has a cup on the rear flange that will not allow the fork spring tabs to be installed wrong. Patent Pending.



PLEASE REFER TO FACTORY SERVICE MANUALS FOR DETAILED APPLICATION SPECIFIC PROCEDURES.

This bulletin is to assist in the safe and effective servicing of this application. Transmissions, transaxles and transfer cases are heavy and their safe removal and replacement requires the use of proper tools, equipment and procedures to prevent injury and damage. Always read and follow instruction bulletins and factory service manuals for detailed clutch servicing procedures

www.clutchtechsupport.com