

REMOVAL/INSTALL INSTRUCTIONS: REPLACEMENT RADIO BUTTONS

ATTENTION: Refer to the appropriate shop manual for your vehicle to obtain specific service procedures for this part. If you do not have a service manual or have any reservations with this instruction set, please seek the services of a qualified technician. Also, please pay special attention to all cautions and warnings included in the shop manual, and Read and follow all instructions carefully!

REMOVAL/INSTALL OF RADIO BUTTONS (Part# 76822) GM Vehicles 2003-2007

General Tech Tips:

- Work in a location that is clean & static-free (static discharge has the potential to permanently damage electrical components).
- Use plastic zip-lock bags or compartment trays to temporarily store small screws and other items that may need disassembly from the radio. Labeling these containers with respect to their subassemblies will make organization and re-assembly a lot easier.
- A plastic pry tool is useful. It will not easily damage delicate trim like a screwdriver or metal pry bar
- Upon disassembly of the button components, pay specific attention to the 'layering' of components as this will be critical to the proper function of the replacement buttons during re-installation
- Be aware of sharp edges from the metal enclosures of the radios

For a digital copy of this instruction sheet, please visit:
<http://www.dormanproducts.com>

Common Tools Used:

- Flat-head screwdrivers
- Needle-nose pliers
- 3/16 Hex nut driver
- 1/8 Hex nut driver
- Torx 15 bit driver
- Socket wrench set

Please Wear Protective Eyewear!



Disclaimer:

Even though every attempt is made to ensure this information is complete and accurate, it is impossible to account for all possible circumstances or situations. Please consult with a qualified auto technician before attempting to perform any work you are not qualified to do. Automobiles can be hazardous to work on; be sure to take all necessary safety precautions. Failure to do so may result in property damage or personal injury. Certain motor vehicle standards and performance requirements may apply to your motor vehicle (such as Federal Motor Vehicle Safety Standards by the National Highway Traffic Safety Administration). Be sure that your work is performed in accordance with such standards and that you do not disable any motor vehicle safety feature.

REMOVAL/INSTALL INSTRUCTIONS: REPLACEMENT RADIO BUTTONS

ATTENTION: Refer to the appropriate shop manual for your vehicle to obtain specific service procedures for this part. If you do not have a service manual or have any reservations with this instruction set, please seek the services of a qualified technician. Also, please pay special attention to all cautions and warnings included in the shop manual, and Read and follow all instructions carefully!

Step 1:

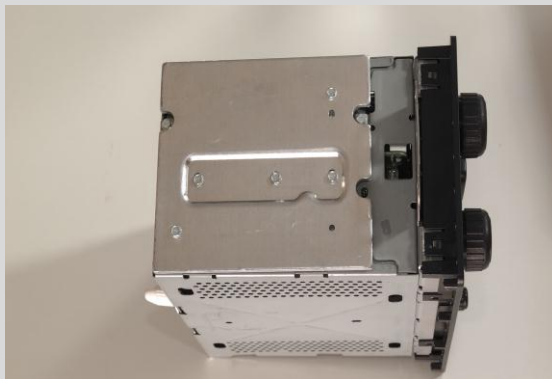
- Remove the factory radio from vehicle. Please consult a service manual for the vehicle for proper removal.
- Once removed, place the radio in an appropriate static-free work area.



Radio Head Unit



Rear View



Side View

Disclaimer:

Even though every attempt is made to ensure this information is complete and accurate, it is impossible to account for all possible circumstances or situations. Please consult with a qualified auto technician before attempting to perform any work you are not qualified to do. Automobiles can be hazardous to work on; be sure to take all necessary safety precautions. Failure to do so may result in property damage or personal injury. Certain motor vehicle standards and performance requirements may apply to your motor vehicle (such as Federal Motor Vehicle Safety Standards by the National Highway Traffic Safety Administration). Be sure that your work is performed in accordance with such standards and that you do not disable any motor vehicle safety feature.

REMOVAL/INSTALL INSTRUCTIONS: REPLACEMENT RADIO BUTTONS

ATTENTION: Refer to the appropriate shop manual for your vehicle to obtain specific service procedures for this part. If you do not have a service manual or have any reservations with this instruction set, please seek the services of a qualified technician. Also, please pay special attention to all cautions and warnings included in the shop manual, and Read and follow all instructions carefully!

Step 2:

- To begin, remove any toggle knobs using a thin screwdriver or pliers; these are generally press-fit onto a keyed shaft or a plastic housing, so be sure to gently pry/pull the knobs off!
- For the secondary lower toggle knobs, like the power button, use a thin screw driver and gently pry a little from one side to the opposite side. The knob should slowly inch off, allowing for pulling by hand.



Knob Removal Type 1



Knob Removal Type 2



Without Knobs

Disclaimer:

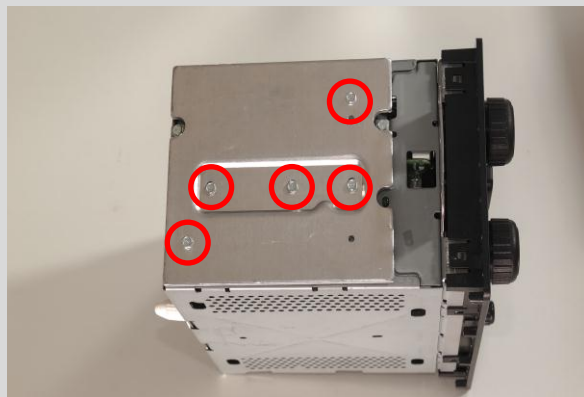
Even though every attempt is made to ensure this information is complete and accurate, it is impossible to account for all possible circumstances or situations. Please consult with a qualified auto technician before attempting to perform any work you are not qualified to do. Automobiles can be hazardous to work on; be sure to take all necessary safety precautions. Failure to do so may result in property damage or personal injury. Certain motor vehicle standards and performance requirements may apply to your motor vehicle (such as Federal Motor Vehicle Safety Standards by the National Highway Traffic Safety Administration). Be sure that your work is performed in accordance with such standards and that you do not disable any motor vehicle safety feature.

REMOVAL/INSTALL INSTRUCTIONS: REPLACEMENT RADIO BUTTONS

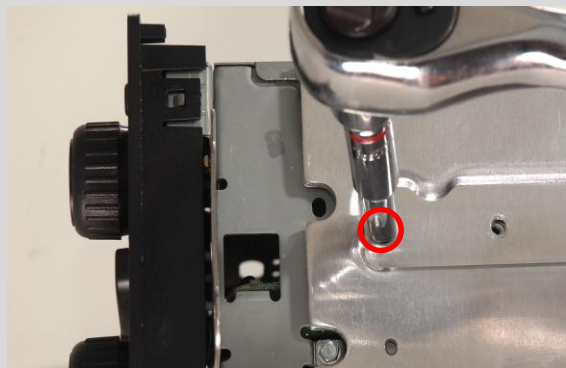
ATTENTION: Refer to the appropriate shop manual for your vehicle to obtain specific service procedures for this part. If you do not have a service manual or have any reservations with this instruction set, please seek the services of a qualified technician. Also, please pay special attention to all cautions and warnings included in the shop manual, and Read and follow all instructions carefully!

Step 3:

- Next, the top plate of the metal enclosure needs to be removed. One side of this application has a metal bracket that needs to be removed in order to get to the remaining metal tabs that secure the top plate (note: this voids warranty).
- Use the hex nut driver to do this, and place these items in a small plastic bag, box, or container (labeled by component) to ensure that the bolts/screws do not get misplaced before reinstallation.



Various Bolts / Screws for Removal



Various Bolts / Screws for Removal

Disclaimer:

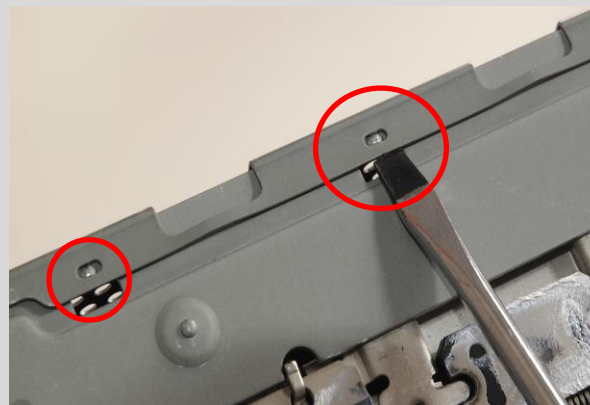
Even though every attempt is made to ensure this information is complete and accurate, it is impossible to account for all possible circumstances or situations. Please consult with a qualified auto technician before attempting to perform any work you are not qualified to do. Automobiles can be hazardous to work on; be sure to take all necessary safety precautions. Failure to do so may result in property damage or personal injury. Certain motor vehicle standards and performance requirements may apply to your motor vehicle (such as Federal Motor Vehicle Safety Standards by the National Highway Traffic Safety Administration). Be sure that your work is performed in accordance with such standards and that you do not disable any motor vehicle safety feature.

REMOVAL/INSTALL INSTRUCTIONS: REPLACEMENT RADIO BUTTONS

ATTENTION: Refer to the appropriate shop manual for your vehicle to obtain specific service procedures for this part. If you do not have a service manual or have any reservations with this instruction set, please seek the services of a qualified technician. Also, please pay special attention to all cautions and warnings included in the shop manual, and Read and follow all instructions carefully!

Step 4:

- After removing this plate, use screwdrivers to gently unclasp the metal tabs that secure the top plate enclosure piece.
- These tabs are located around the perimeter of this top plate. There are open slots throughout these locations to provide the leverage needed to slightly bend the metal enclosure to release the top plate. Keep in mind that these will need to be re-fastened in the same manner, so try not to bend the metal plate excessively. Once loosened remove the top plate from the radio enclosure and set aside. Do the same for the bottom plate.



Prying out the metal tabs that clasp the top plate to the enclosure



Removing the bottom plate as well



Placing the metal plate aside, PCB board and its connectors is accessible

Disclaimer:

Even though every attempt is made to ensure this information is complete and accurate, it is impossible to account for all possible circumstances or situations. Please consult with a qualified auto technician before attempting to perform any work you are not qualified to do. Automobiles can be hazardous to work on; be sure to take all necessary safety precautions. Failure to do so may result in property damage or personal injury. Certain motor vehicle standards and performance requirements may apply to your motor vehicle (such as Federal Motor Vehicle Safety Standards by the National Highway Traffic Safety Administration). Be sure that your work is performed in accordance with such standards and that you do not disable any motor vehicle safety feature.

REMOVAL/INSTALL INSTRUCTIONS: REPLACEMENT RADIO BUTTONS

ATTENTION: Refer to the appropriate shop manual for your vehicle to obtain specific service procedures for this part. If you do not have a service manual or have any reservations with this instruction set, please seek the services of a qualified technician. Also, please pay special attention to all cautions and warnings included in the shop manual, and Read and follow all instructions carefully!

Step 5:

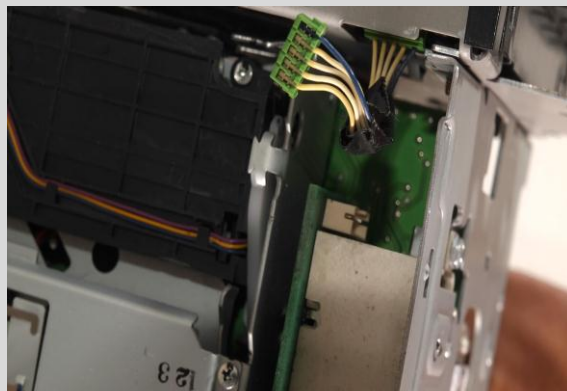
- Next, carefully unfasten the wiring harnesses that connect the front radio PCB board to the now-accessible PCB board. Gently pull these connectors off or use a small screwdriver to provide additional assistance.
- The same will be done for the bottom side of the radio; there is one connector that mates the faceplate PCB board to another.



Two connectors unfastened from the top PCB board



The bottom of the radio has a third connector that needs to be unfastened



Gently pull this connector off or use a screwdriver for assistance

Disclaimer:

Even though every attempt is made to ensure this information is complete and accurate, it is impossible to account for all possible circumstances or situations. Please consult with a qualified auto technician before attempting to perform any work you are not qualified to do. Automobiles can be hazardous to work on; be sure to take all necessary safety precautions. Failure to do so may result in property damage or personal injury. Certain motor vehicle standards and performance requirements may apply to your motor vehicle (such as Federal Motor Vehicle Safety Standards by the National Highway Traffic Safety Administration). Be sure that your work is performed in accordance with such standards and that you do not disable any motor vehicle safety feature.

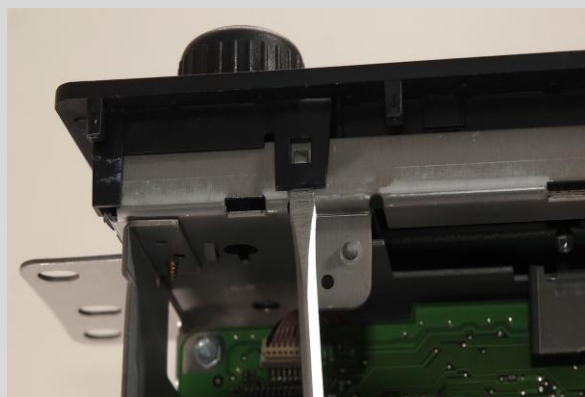
REMOVAL/INSTALL INSTRUCTIONS: REPLACEMENT RADIO BUTTONS

ATTENTION: Refer to the appropriate shop manual for your vehicle to obtain specific service procedures for this part. If you do not have a service manual or have any reservations with this instruction set, please seek the services of a qualified technician. Also, please pay special attention to all cautions and warnings included in the shop manual, and Read and follow all instructions carefully!

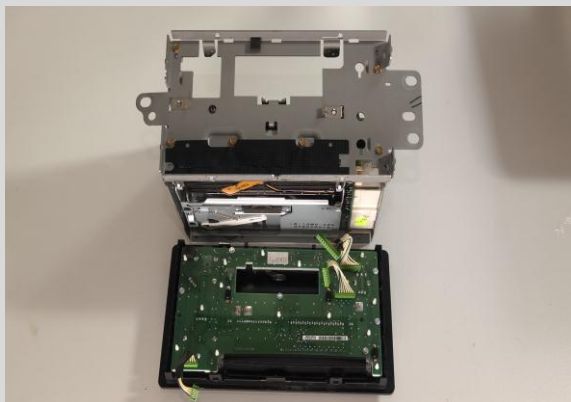
Step 6:

- Now that the front faceplate is no longer connected to the PCB board, the front faceplate can be disassembled. There are plastic tabs that surround the perimeter of the metal enclosure; unclasp these using multiple flathead screwdrivers.
- When pulling the front faceplate off, watch that the loose wiring harnesses do not get tangled.

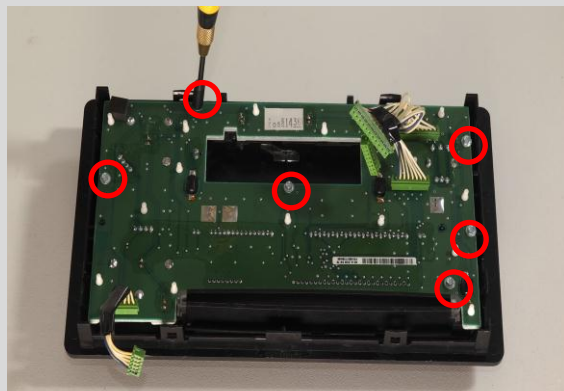
Place the metal enclosure aside and begin removing the several mini bolts using a hex-bolt socket driver. Secure these bolts in a container!



Use multiple flathead screwdrivers to 'wedge' one side at a time, and slide out the faceplate



The radio face removed from the metal enclosure



Remove the several mini-bolts here circled in red

Disclaimer:

Even though every attempt is made to ensure this information is complete and accurate, it is impossible to account for all possible circumstances or situations. Please consult with a qualified auto technician before attempting to perform any work you are not qualified to do. Automobiles can be hazardous to work on; be sure to take all necessary safety precautions. Failure to do so may result in property damage or personal injury. Certain motor vehicle standards and performance requirements may apply to your motor vehicle (such as Federal Motor Vehicle Safety Standards by the National Highway Traffic Safety Administration). Be sure that your work is performed in accordance with such standards and that you do not disable any motor vehicle safety feature.

REMOVAL/INSTALL INSTRUCTIONS: REPLACEMENT RADIO BUTTONS

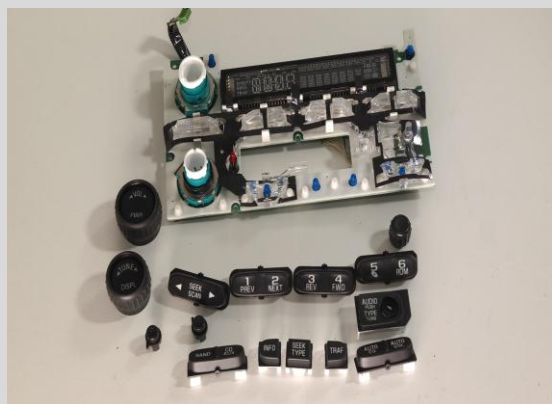
ATTENTION: Refer to the appropriate shop manual for your vehicle to obtain specific service procedures for this part. If you do not have a service manual or have any reservations with this instruction set, please seek the services of a qualified technician. Also, please pay special attention to all cautions and warnings included in the shop manual, and Read and follow all instructions carefully!

Step 7:

- Now that the bolts from the previous step are removed, the PCB board can be separated from the plastic faceplate. Carefully separate these two pieces –as all subcomponents are now loose!
- Re-assembly of these components should be done in reverse order of this tutorial. Note where harnesses plug into by reviewing the pictures in this tutorial closely. DO NOT force connectors; they only go in one-way. Be aware of the layering of subcomponents as these will be critical to the function of the radio upon re-assembly/re-installation!



Take note of the order of the buttons! As well as the relative layering of subcomponents!



Replace and follow these instructions in reverse!

Disclaimer:

Even though every attempt is made to ensure this information is complete and accurate, it is impossible to account for all possible circumstances or situations. Please consult with a qualified auto technician before attempting to perform any work you are not qualified to do. Automobiles can be hazardous to work on; be sure to take all necessary safety precautions. Failure to do so may result in property damage or personal injury. Certain motor vehicle standards and performance requirements may apply to your motor vehicle (such as Federal Motor Vehicle Safety Standards by the National Highway Traffic Safety Administration). Be sure that your work is performed in accordance with such standards and that you do not disable any motor vehicle safety feature.