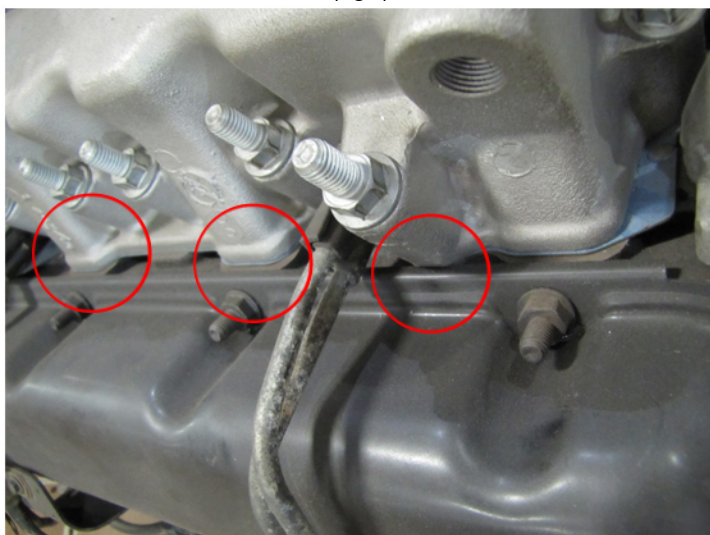


GM 6.5L V8 Diesel Engines Engine Installation Bulletin

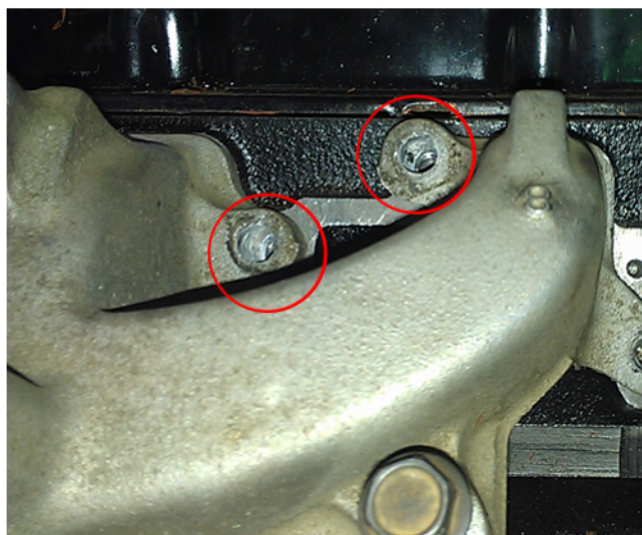
Intake Manifold and Valve Cover Installation Caution

Installation of the intake manifold prior to installing the valve covers is recommended. The valve cover to intake manifold clearance is very close (fig1) and the valve covers have "play" in the bolt holes allowing it to move slightly in either direction. If the cover is pushed too far toward the top of the engine the manifold alignment will be effected and one side of the bolts will align and the other side will not (fig2).

(fig1)



(fig2)



There are varying valve cover configurations offered by GM, therefore the valve covers included must be installed to match your original core engine. Due to inherent valve cover leaks elimination of the OEM style cork gasket is recommend. The use of products such as "Right Stuff" or Loctite 5900 sealants are recommended for their strong adhesive properties and to ensure a leak-free installation. Also notice that the non-vented cover is double wall and should not be separated at time of installation.