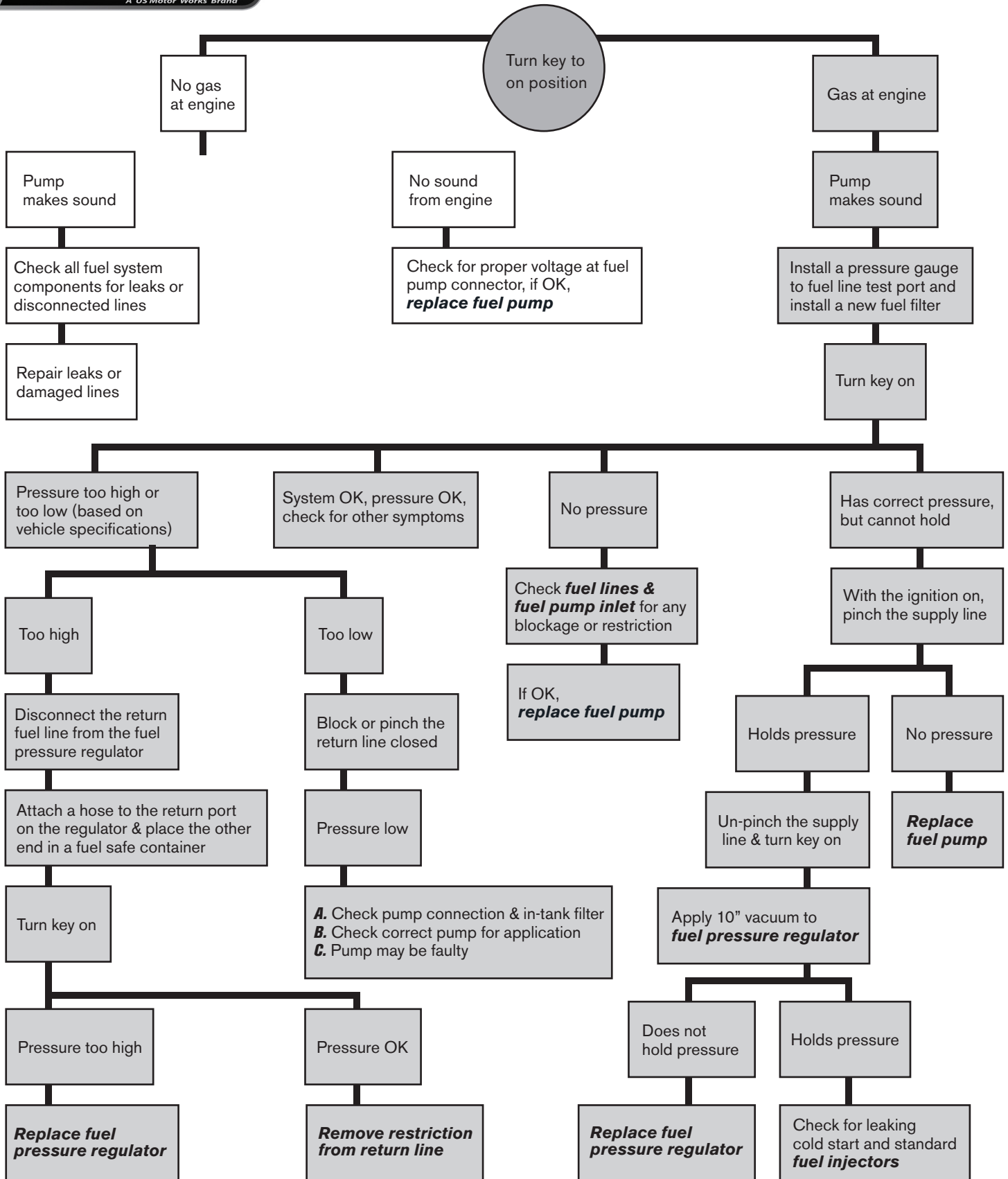




FUEL SYSTEM DIAGNOSTIC TREE



Keep your work area clean!

The number 1 cause of fuel pump failures is from fuel pump contaminants such as dirt, rust, & moisture. If the fuel system is not cleaned, then these contaminants will cause the replacement fuel pump to fail prematurely. Make sure to clean your fuel tank & keep your work area clean to prevent this type of contamination.